

Anti-CEA hIgG1 Antibody(Cibisatamab)

Product information

GM-28531AB-10	10 µg
GM-28531AB-100	100 µg
GM-28531AB-1000	1 mg

Antibody Information

Species Reactivity	Human
Clone	Cibisatamab
Source/Isotype	Monoclonal Human IgG1 /k
Application	Flow Cytometry
Specificity	Detects CEA
Gene	CEA
Other Names	CD66e, CEACAM5
Gene ID	1048
Background	Carcinoembryonic antigen-related cell adhesion molecule 5 (CEACAM5) also known as CD66e (Cluster of Differentiation 66e), is a member of the carcinoembryonic antigen (CEA) gene family. This gene encodes a cell surface glycoprotein that represents the founding member of the carcinoembryonic antigen (CEA) family of proteins. The encoded protein is used as a clinical biomarker for gastrointestinal cancers and may promote tumor development through its role as a cell adhesion molecule. Additionally, the encoded protein may regulate differentiation, apoptosis, and cell polarity. This gene is present in a CEA family gene cluster on chromosome 19. Alternative splicing results in multiple transcript variants.
Storage	Store at 2-8°C short term (1-2 weeks). Store at ≤ -20°C long term. Avoid repeated freeze-thaw.
Formulation	Phosphate-buffered solution, pH 7.2.
Endotoxin	< 1 EU/mg, determined by LAL gel clotting assay

Data Examples

Flow cytometry

The recommended usage range is 0.5-4 μg per test. H_CEACAM5(CEA) HEK-293 Cell Line (Catalog # GM-C24838) was stained with Anti-CEA hIgG1 Antibody(Cibisatamab) (Catalog # GM-28531AB) or isotype control antibody, followed by anti-Human IgG APC-conjugated Secondary Antibody.

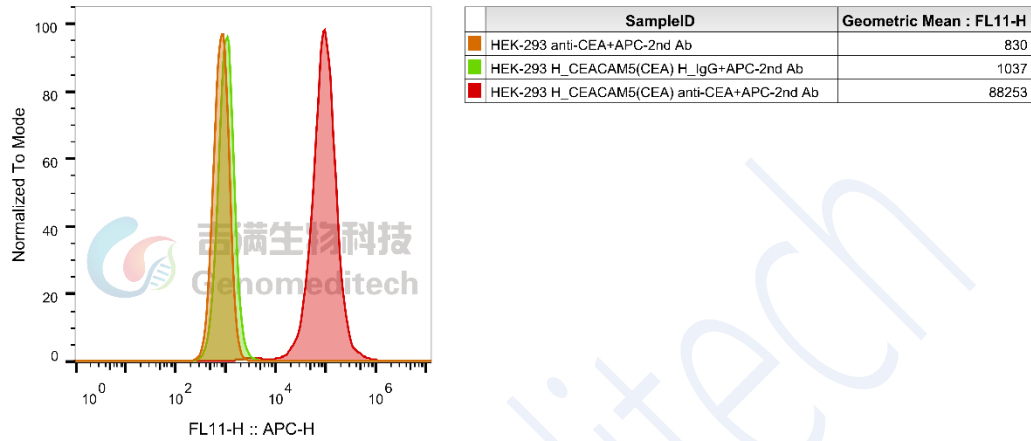


Fig 1. FACS